

**INFORMAZIONI DI SERVIZIO****AFO 641**

8525 641 01000

Ultima modifica: 02/10/2018

Data de allegato: 18/10/2012

LISTA PARTICOLARI	2
DISEGNO ESPLOSO	4
CARATT. TECNICHE	10
SCHEMA CABLAGGIO	11
CODICI ERRORE	14

LA PRESENTE DOCUMENTAZIONE SI RIVOLGE SOLO A TECNICI QUALIFICATI CHE SONO A CONOSCENZA DELLE RISPETTIVE NORME DI SICUREZZA.

SOGGETTA A MODIFICHE

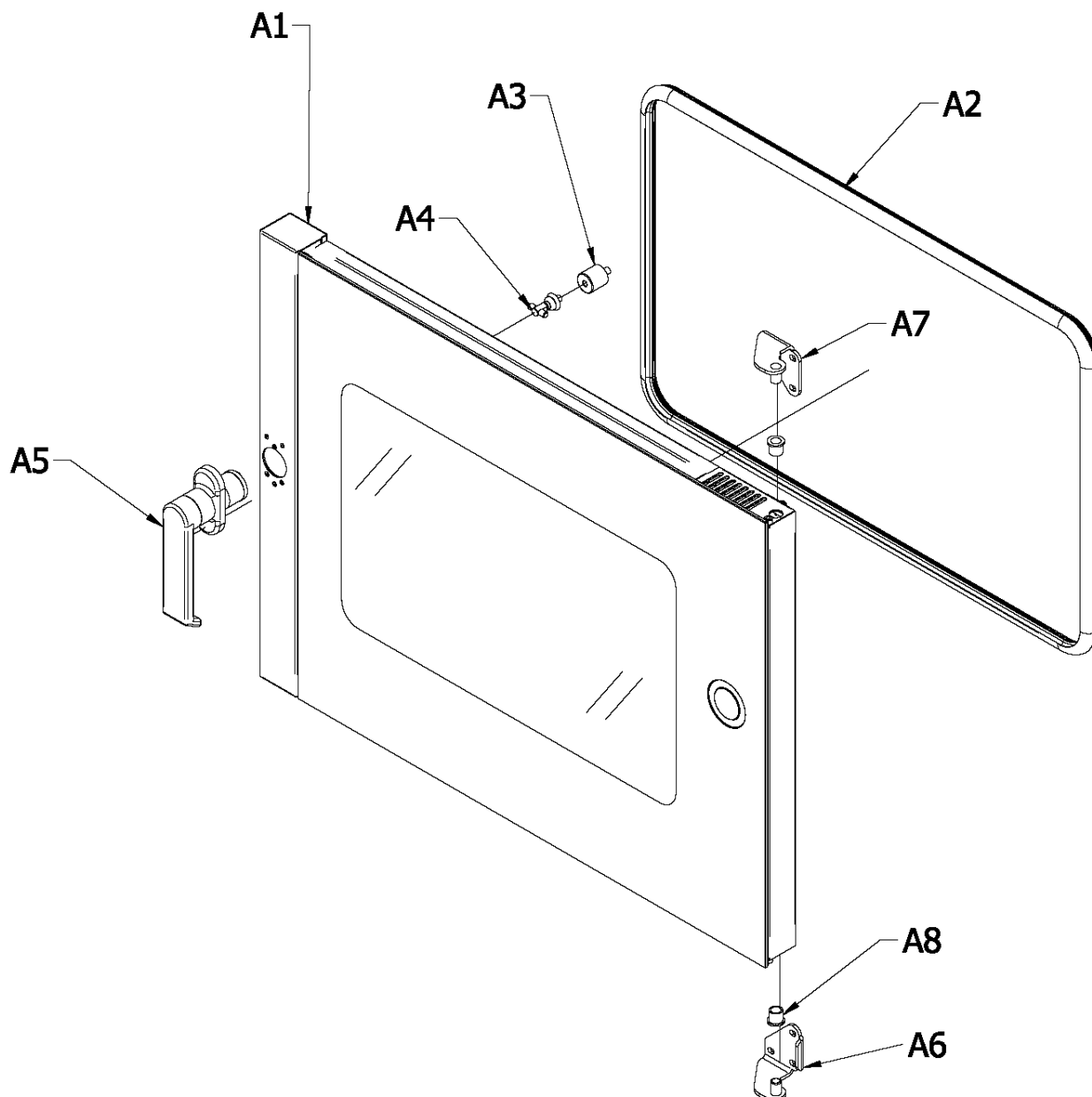
LISTA PARTICOLARI

Pos-Nr.	12NC	DESCRIPTIONE
A1	4820 000 12879	PORTA
A2	4820 000 12880	GUARNIZIONE
A3	4820 000 12817	PERNO MANIGLIA
A4	4820 000 12819	MOLLA MANIGLIA
A5	4820 000 12820	MANIGLIA PORTA
A6	4820 000 12821	CERNIERA A BASSO, DX
A7	4820 000 10542	CERNIERA DX
A8	4820 000 03549	BUSSOLA
B1	4820 000 12881	VETRO OBLO
B10	4820 000 03652	MAGNETE
B11	4820 000 12831	SCHEDA CONTROL.
B2	4820 000 12823	COPERCHIO VETRO ALTO DX
B3	4820 000 12824	COPERCHIO VETRO ABASSO DX
B4	4820 000 12825	COPERCHIO VETRO ABASSO SX
B5	4820 000 12826	COPERCHIO VETRO ALTO SX
B6	4820 000 12827	GUARNIZIONE
B7	4820 000 12828	OCCHIELLO
B8	4820 000 12829	CERNIERA VETRO
B9	4820 000 12830	PERNO VETRO
C1	4820 000 12832	GIRANTE
C10	4820 000 02806	GEMMA X LAMPADA
C11	4820 000 10551	PIEDINO
C2	4820 000 12833	RONDELLA
C3	4820 000 12887	RESISTENZA 9000W 400V
C4	4820 000 03559	INTERRUTTORE PT
C5	4820 000 02804	SONDA
C6	4820 000 12834	SONDA
C7	4820 000 02793	GUARNIZIONE LAMPADA Halog.
C8	4820 000 02805	PORTA LAMPADA
C9	4810 103 91431	FORNO LAMPADA ALOGENA 40W
D1	4820 000 12835	MOTORE
D10	4820 000 10532	TERMOSTATO TF 320°
D11	4820 000 12889	CONTATORE 400V - 11KW
D11	4820 000 12888	CONTATORE 400V - 7,5KW
D12	4820 000 12842	CONDENSATORE 4mf
D13	4820 000 12843	CONDENSATORE 10 mf
D14	4820 000 02798	STAFFA grigio
D15	4820 000 02799	STAFFA giallo-verde
D19	4820 000 20993	TUBETTO D8xD6, L=2.5 m
D2	4820 000 12836	VENTAGLIO
D3	4820 000 12837	ATTIVATORE 230 V
D4	4820 000 12838	ELETTROVALVOLA
D4	4820 000 12882	VALVOLA JG 8/8
D5	4820 000 12839	INGRESSO ACQUA + FILTRO
D7	4820 000 03642	TRASFORMATORE
D8	4820 000 12840	RELE 30A
D9	4820 000 12841	PIASTRINA
F1	4820 000 12855	ROTORE LAVAGGIO
F10	4820 000 12864	RIDUTTORE
F11	4820 000 12865	SCHEDA CONTROL LAVAGGIO

Pos-Nr.	12NC	DESCRIZIONE
F12	4820 000 12866	TUBETTO D6xD4
F13	4820 000 20993	TUBETTO D8xD6, L=2.5 m
F2	4820 000 12856	PERNO
F3	4820 000 12857	POMPA 3l/h, 230V
F4	4820 000 12858	ELETTROVALVOLA + FILTRO
F5	4820 000 12859	FILTRO
F6	4820 000 12860	COLLEGAMENTO
F7	4820 000 12861	COLLEGAMENTO INTERM.. Y D8
F8	4820 000 12862	COLLEGAMENTO INTERM. D8
F9	4820 000 12863	COLLEGAMENTO D8

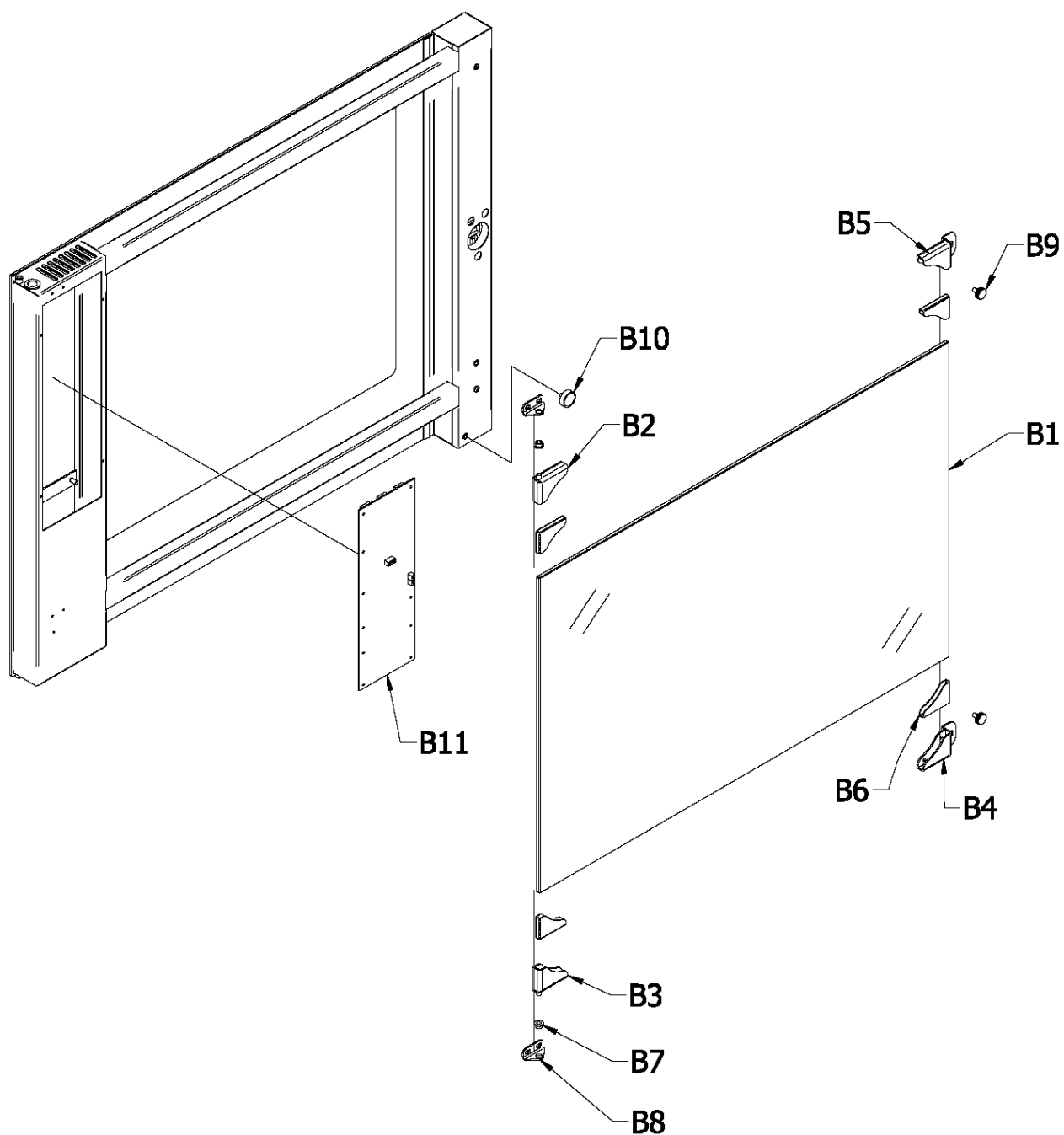
DISEGNO ESPLOSO

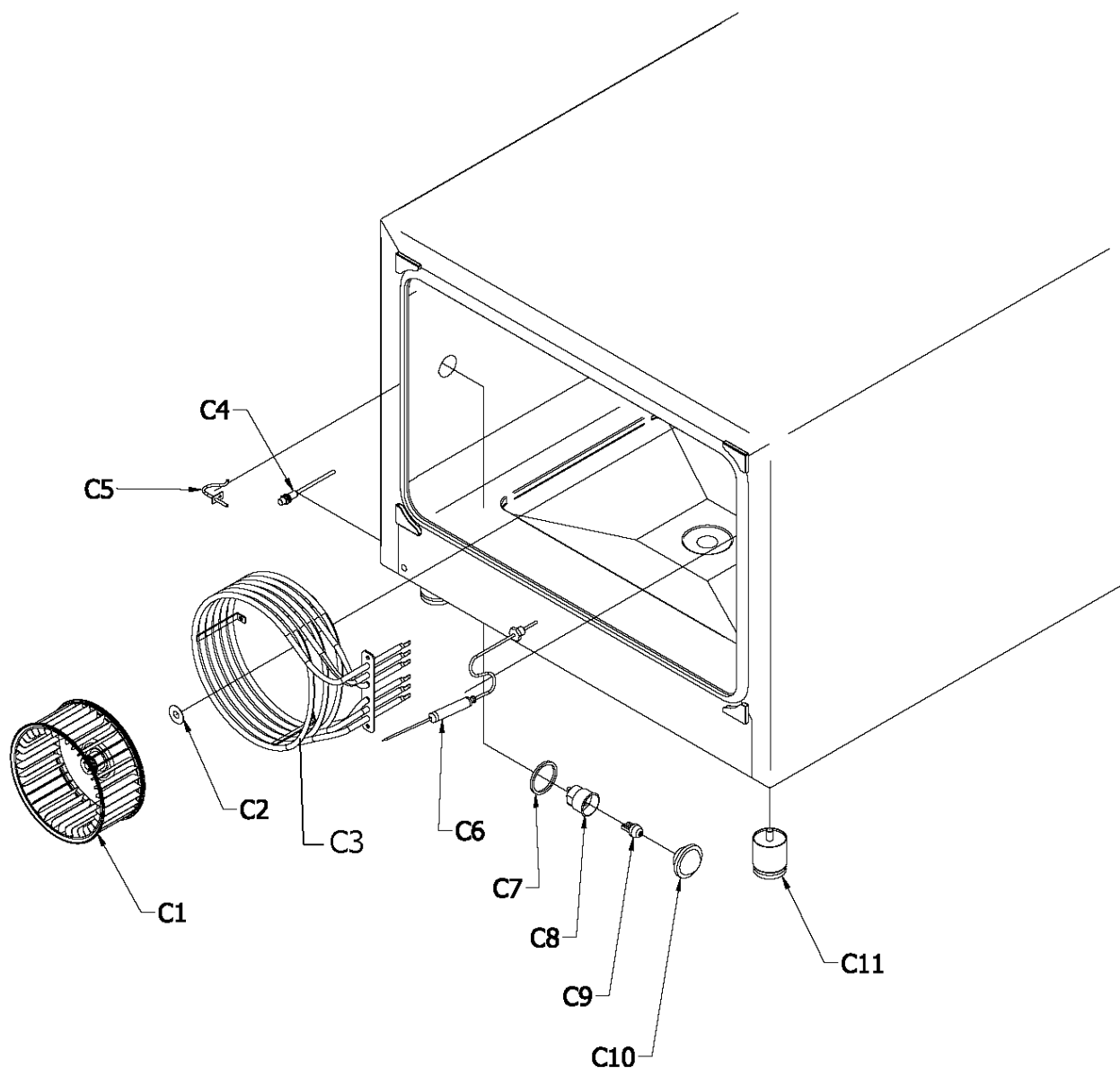
A: PARTE ESTERNA DELLA PORTA- EXTERNAL PART OF THE DOOR- DIE AUSSENSEITE DER TÜR- L'EXTÉRIEUR DE LA PORTE

**AFO641_A**

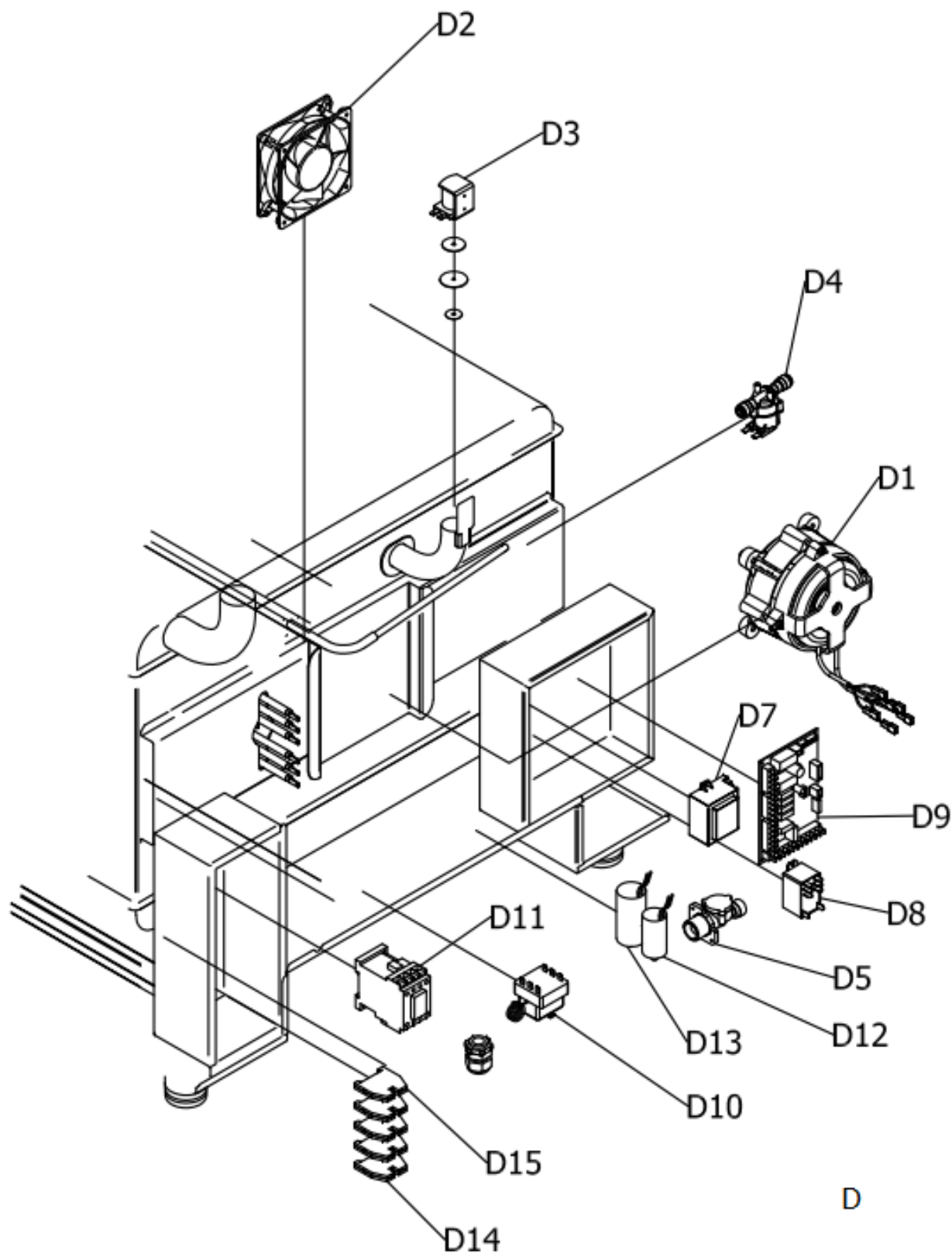
DISEGNO ESPLOSO

**B: PARTE INTERNA DELLA PORTA- INTERNAL PART OF THE DOOR- DIE INNENSEITE DER TÜR -
INTÉRIEUR DE LA PORTE**

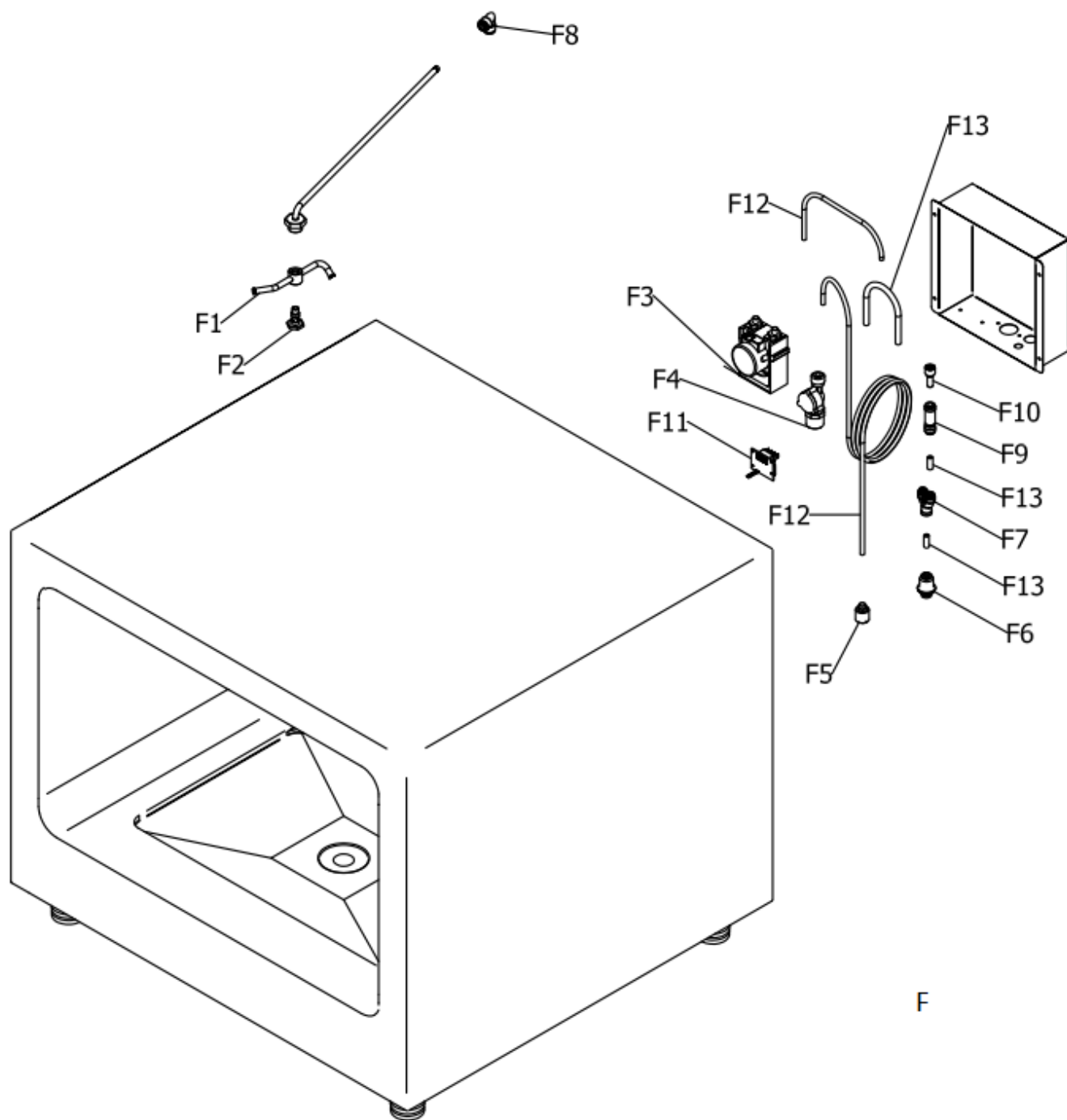
**AFO641_B**

DISEGNO ESPLOSO**C: LA CAMERA DI COTTURA DEL FORNO- OVEN'S CHAMBER- DAS INNERE DES OFEN-
CHAMBRE DU FOUR****AFO641_C**

DISEGNO ESPLOSO



DISEGNO ESPLOSO



CARATT. TECNICHE**CONSUMO ENERGIA**

ELETTRICO / ALOGENO 19 kW

ALLACCIAMENTI ELETTRICI

TENSIONE 400 V (trifase)

FREQUENZA 50Hz

DIMENSIONI MOBILE

ALTEZZA 97.0 cm

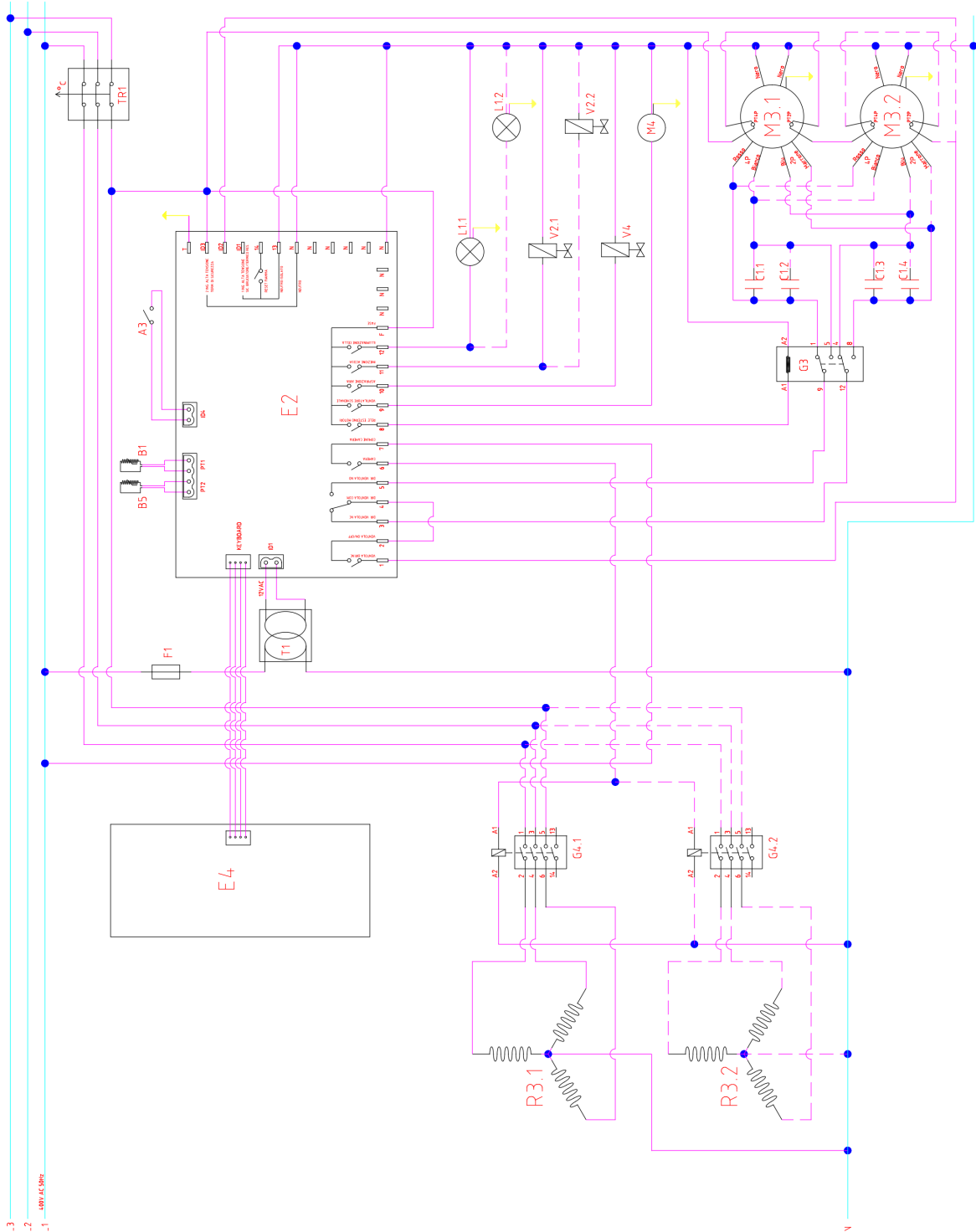
LARGHEZZA 82.0 cm

PROFONDITA 83.0 cm

PESO

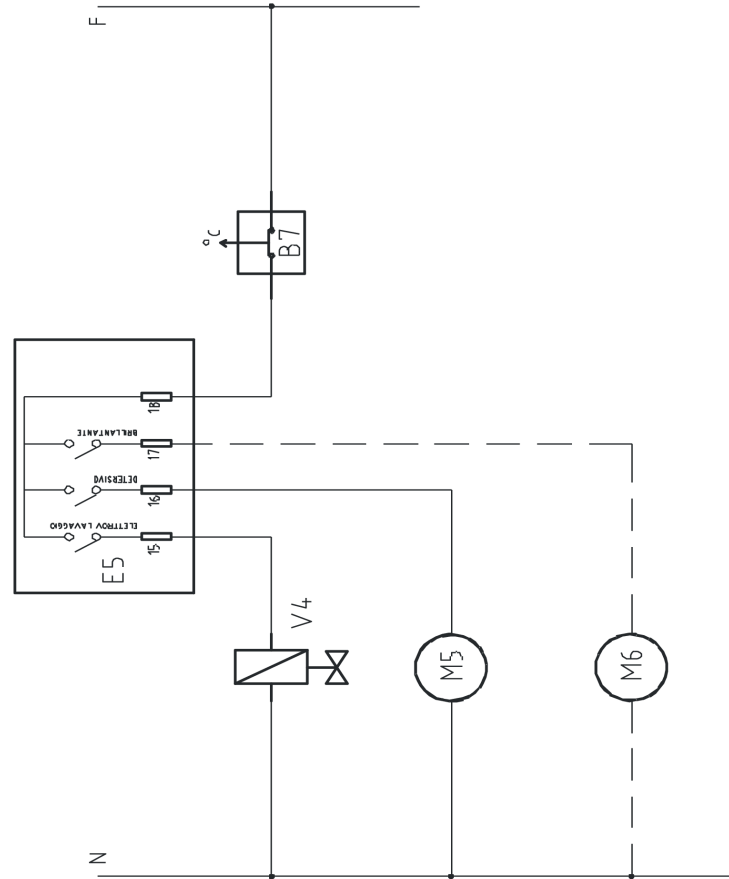
NETO 105 kg

SCHEMA CABLAGGIO



AFO641_WD

WASHING



ITALIANO

B7: Termostato di sicurezza (impianto elt. forno)
E5: Scheda relè lavaggio
M5: Pompa peristaltica detergente
M6: Pompa peristaltica brillantante (optional)
V4: elettrovalvola lavaggio

ENGLISH

B7: Safety thermostat (system elt. oven)
E5: Relay board washing
M5: Peristaltic pump detergent
M6: Peristaltic pump rinse (optional)
V4: wash solenoid

DEUTSCH

B7: Sicherheitsthermostat (System Elt Backofen)
E5: Relaisplatine Waschen
M5: Schlauchpumpe Waschmittel
M6: Schlauchpumpe spülen (optional)
V4: waschen Magnet

FRANCAIS

B7: Thermostat de sécurité (elt système Four)
E5: Carte relais à laver
M5: Détergent Pompe péristaltique
M6: Rincer Pompe péristaltique (facultatif)
V4: lavage magnétique

ESPAÑOL

B7: Termostato de seguridad (ELT sistema Horno)
E5: Relais bordo de lavado
M5: Peristáltica de detergente de la bomba
M6: Enjuague la bomba peristáltica (opcional)
V4: lavado de solenoide

LEGENDA

C1.1	Capacitor
C1.2	-----
C1.3	Capacitor
C1.4	-----
G4.1	Contactora
G4.2	-----
L1.1	Lamp 33W 230V
L1.2	-----
M3.1	Fan motor
M3.2	-----
R3.1	Resistance
R3.2	-----
V2.1	Watersolenoid
V2.2	-----
A3	Door switch
B1	Probe cavity
B5	Core temperature probe
B7	Thermostat
E2	Power board
E4	Control board
F1	Fuse
G3	Fan relay
M4	Fan cooling rear
TR1	Transformer 220-12Vac 10VA
V4	Solenoid air

AFO641_en

CODICI ERRORE

VISUALIZATION ON DISPLAY

DISPLAY	DESCRIPTION
PARAM	Menu service to enter in parameters
CLOCK	Menu service to set the clock
SERV_1	Menu service to test the card
SERV_2	Menu service to erase the user's program
VERS	Menu service to visualize firmware version
THERM	Thermic error safety-Error of the thermic protector
FAN	Fan error
BURNER	Burner error
CHAMPR	Chamber's probe error
COREPR	Core probe's error
SERCOM	Serial communication error
TPCARD	Power card temperature error
GENER	General error
MANUAL	Category of a program
POULTRY	
MEAT	
FISH	
VEGETABLE	
PASTRY	
BREAD	
PIZZA	
VARIOUS	
WASHING	
FULL MEMO	Full memory when you try to save a program
OVERWR	Request of overwriting for a program
USB	USB Menu
IMPORT	Recipe's importation da USB
EXPORT	Recipe's exportation da USB
HACCP	Exportation file log HACCP
DUCK	Recipe's name memorized by the producer
CHICKEN	
TURKEY	
PORK	
BEEF	
VEAL	
BASS	
TURBOT	
TROUT	
PRAWNS	
CARROTS	
POTATOES	
PEAS	
CHICORY	
BRIOCHE	
PANETTONE	
BAGUETTE	
MARGHERITA	
RISING	
NORMAL	Washing programs
STRONG	
EXTRSTRONG	
RINSE	
SETUP	

DIAGNOSE OF ALARMS (ERRORS) AND RESTORE OF THEM

All the alarms are showed on display.

1. CHAMBER'S PROBE

With the card in READY, START or TEMPORARY STOP mode, if you see on display "CHAMPR" and you hear the sound of the buzzer, there is a problem with the chamber's probe. If a cooking is carrying out, it will stop immediately, and the card goes to READY mode. The buzzer stops by pressing every key. There is an auto-restoring of the chamber's probe.

2. CORE PROBE

If the core probe has a problem, with the card in READY, START or TEMPORARY STOP mode, and the current phase or one of the following ones, includes a CORE PROBE COOKING or a DELTA T COOKING, the cooking stops and the card goes to TEMPORARY STOP mode. On display you see "COREPR" and the buzzer sounds. The card doesn't go to "ALARM" or "ERROR" if it is in READY, FALL IN VOLTAGE or STAND-BY. By pressing every key you stop the buzzer. The restoring is automatic when the core probe is in function again (auto restoring).

3. SERIAL COMMUNICATION

If there is no communication between power card and keyboard for more than 10 sec., the keyboard goes to "ALARM" or "ERROR": the buzzer sounds and you visualize "COMSER". The card doesn't go to "ALARM" or "ERROR" if it is in FALL IN VOLTAGE or STAND-BY. The carrying out cooking is stopped and the card goes to READY mode. By pressing every key you stop the buzzer. The restoring is automatic when there is communication again (auto restoring).

4. POWER CARD TEMPERATURE

If the temperature of the power card exceeds the value fixed by the producer, the power card goes to alarm mode: you see on display "TPCARD" and buzzer starts to sound. The card doesn't go to "ALARM" or "ERROR" if it is in FALL IN VOLTAGE or STAND-BY. The carrying out cooking is stopped and the card goes to READY mode. By pressing every key you stop the buzzer. The restoring is automatic when the temperature returns under the fixed safety limit (auto restoring).

5. OPEN DOOR

In START mode, if there is an open door the card goes to TEMPORARY STOP and START/STOP led begins to blink. Every carrying out cooking is stopped until the closing of the door.

6. SAFETY ENTRANCES

The card has 3 safety entrances: chamber's safety, burner's safety, fan's safety.

If the card in READY, START or TEMPORARY STOP mode, you can see on display the message (of its own error) and the buzzer starts to sound.

On display you can see:

"THERM": Thermic error safety

"FAN": Fan error

"BURNER": Burner error

The card doesn't go to "ALARM" or "ERROR" if it is in READY, START or TEMPORARY STOP mode.

Every carrying out cooking is stopped and the card goes to READY mode. To restore you have to press the key (10) ERASE.

7. FALL IN VOLTAGE

When you have a fall in voltage and the card is in START or TEMPORARY STOP, at the following power on the card goes to TEMPORARY STOP and the eventual interrupted cooking re-starts. The temporary program is memorized after every 10 minutes and in changing of phase. If the card wasn't in START or TEMPORARY STOP, it goes to STAND BY and supports the memorized manual program. There are no alarms or errors or buzzer's sounds